

KL-4 N

689

# ORTHOPEDIC

## SPECIFICATION FOR CAUTRY MACHINE

We introduce in the medical sector a new microprocessor based Electro Surgical Generator – SMART 4 . It combines excellent performance of Monopolar ( Cut – Coag ) and BIPOLAR modes, Integrated with microprocessor controls. This ESU provides user safety to the user during surgery and is ideal for surgeries that require high precision and reliability. Spray coagulation is an internal part of this surgical unit that gives a good homeostasis effect with minimum cutting effect.

### FEATURE :

- 1) Feedback controlled response system
- 2) Automatically stops energy delivery as soon as the seal cycle is complete .
- 3) Minimum cutting effect
- 4) Spray Coagulation
- 5) Pure and smooth cut
- 6) BIPOLAR Output with a non sparking characteristics
- 7) Prompt start even in irrigation procedures
- 8) Providing good homeostasis effect

### APPLICATION :

- 1) Micro Surgery
- 2) Laparoscopy surgery
- 3) Neurosurgery

### TECHNICAL SPECIFICATION : CUT :

MODE	PROGRAMS	POWER	LOAD	Operating Frequency
PURE	99	400 W	500 Ω	480 KHz
BLEND 1	99	250 W	500 Ω	480 KHz
BLEND 2	99	200 W	500 Ω	480 KHz
Endocut	99	99 %	500 Ω	480 KHz

COAG :

MODE	PROGRAM	POWER	LOAD	Operating Frequency
SPRAY	99	120 W	500 Ω	480 KHz
FULGURATE	99	150 W	500 Ω	480 KHz
DESSICATE	99	150 W	500 Ω	480 KHz

BIPOLAR :

MODE	PROGRAM	POWER	LOAD	Operating Frequency
SOFT	99	80 W	100	480 KHz
FORCE	99	80 W	100	480 KHz
CUT	99	100 W	100	480 KHz

Other Parameters :

Display	7 Segment LED
Dimension ( W / H / D )	290mm / 105mm / 260mm
Weight	4 Kg
Keyboard	Feather touch
Input Supply Voltage	230V/AC + 15% @ 50/60hz

*Shrode*  
 Professor & Head  
 Dept. of Orthopaedics  
 S.R.T.R. Govt. Medical College,  
 Ambajogai

0394

Name of Instrument : PULSE OXIMETER  
Technical Specification

1. Compact portable bedside pulse oximeter with minimum 4 inch and above, multicolor TFT LCD display.
2. Continuous monitoring of SpO<sub>2</sub> (arterial blood oxygen saturation), pulse rate and signal strength
3. Should have manual selection of adult, pediatric and neonatal mode.
4. Measuring Range:
  - a. SpO<sub>2</sub>: 1 to 100%
  - b. Pulse Rate: 25 to 250 bpm
  - c. Pulse Amplitude: 0.03% to 20%
5. Accuracy SpO<sub>2</sub> for Adult, Pediatric & Neonate - 70% to 100% ( $\pm 2$  digits) & 60% to 69% ( $\pm 3$  digits)
6. Display Shows: SpO<sub>2</sub> (%), PR (HR in bpm), Plethysmographic Waveform, Pulse amplitude with visual indicators for pulse search, audible alarms silenced or off, interference indicator, battery charging and Alarm management settings
7. Multicolor display screen with ideal contrast for easy readability
8. Should offer accurate and reliable performance in monitoring conditions of low perfusion and signal interference. It must show SpO<sub>2</sub> value for low perfusion patients with accuracy - 70% to 100% ( $\pm 2$  digits)
9. Should have wide range of sensors including forehead sensor for more effective monitoring option in low perfusion patients
10. Tenderer should have wide range of sensors for Adult, Pediatric, Neonatal and premature patient types separately for adhesive and Velcro type disposable sensors to accommodate diverse patient sizes, weights and needs.
11. Sensor Event Report, allowing patient alarm events to be recorded on sensors for memory back up of 80 hours or more.
12. Power Requirements: 100 to 240V, 50/60Hz and internal re-chargeable battery with 5 hours battery back-up
13. It should be European CE and US FDA approved for device and sensors.
14. Should be certified for CCHD Screening & motion artifact by USFDA.
15. It should be light weight of less than 2kg and size not above 84Hx260Wx170D (mm)
16. It should comply with EN IEC 60601 standard
17. User preset of high/low alarm on SpO<sub>2</sub> and PR monitoring
18. Audio visual alarm for SpO<sub>2</sub> and PR in case measurements are outside preset range with alarm silence feature
19. Should have Satseconds alarm management system to reduce the unwanted alarms which disturbs the sick patients.
20. Automatic switch from mains to batteries in case of power failure
21. Should have USB port for download and software up-gradation

for

प्राथम्यपक के विभाग प्रमुख  
स्म - रोमाच प्रसुखी शास्त्र विभाग  
स्वतंत्रता प्रतिष्ठान, कैलाश विद्यालय, अंबाजोगाड़

## Product Description Features

With Heart-Rate Monitor  
FETAL DOPPLER

FD-200D+ ultrasonic fetal doppler meets the fetus daily check and routine examination at home, clinic, community and hospital.

## Technical Specification:

Ultrasound frequency: 2MHz  
Ultrasound intensity: <10mW/cm<sup>2</sup>  
Power supply: DC Ni-Mh rechargeable battery AC 220/110V,  
50/60Hz  
Display: 45mm×25mm LCD  
FHR Measuring range: 50~240bpm  
FHR resolution: 1bpm  
FHR accuracy: ±1bpm  
Power consumption: <1W  
Dimension :135mm ×95mm ×35mm  
Weight:500g

## Features:

Easy and convenient operation  
High-fidelity, crystal clear sound  
Earphone and speaker are feasible  
High sensitivity doppler probe  
Low ultrasound dosage  
Display with backlight LCD

## Configuration:

Main body  
2MHz probe  
Ni-Mh battery  
Adaptor

for  
प्राध्यापक व विभागप्रमुख  
रूप-रोग व प्रसूतीशास्त्र विभाग  
स्वा.रा.ती.शा.शा.वे. स्त्रीविद्यालय, अंबाजोगाई

### General Specification:

1. Two Years comprehensive warranty to be followed by 5 years CMC Technical support, required spares and consumables should be assured for two years after initial 2 + 5 years period is over.
2. It should be CE Certified (under MDD) along with declaration of conformity or US FDA approved.
3. Demonstration of quoted model is compulsory.
4. Power supply: 230V $\pm$ 15%, 50 Hz $\pm$ 3%.
5. Operational training to user department.
6. Operating and detail service manual should be provided.
7. Tropicalization: Operating Temperature: 40° C Storage Temperature: 60° C Relative Humidity: Upto 90% none condensing

for

5 प्राध्यापक व विभागप्रमुख

स्त्री।-रोग व प्रसूतीशास्त्र विभाग

स्त्री। रा. ती. ग्रा. शा. वै. महाविद्यालय, अबाजोगाई

## SPECIFICATIONS FOR 12.1" MULTI-PARAMETER PATIENT MONITOR

### Respiration

- Thoracic Impedance or Nasal Tube (Selectable)
- Measurement Range: 0-120BPM
- Accuracy:  $\pm 1$ BPM
- Resolution: 1BPM

### CO<sub>2</sub>(Optional)

- Measurement Type: Main Stream or Side Stream
- Measurement Range: 0%-10.0%
- Accuracy:  $\pm 2$ mmHg

### Power Requirements

100-250VAC, 50/60 Hz


## Configuration

### Standard

- ECG, HR, NIBP, SpO<sub>2</sub>, RESP, TEMP, Drug-concentration calculation, ST-segment detection, pace-maker analysis and arrhythmia analysis, build-in rechargeable battery

### Optional

- ET/CO<sub>2</sub>, build-in printer, 2-IBP (Dual invasive blood pressure), wall mount, monitor trolley

for  


प्राध्यापक व विभागप्रमुख  
स्ना-रोग व प्रसूतीशास्त्र विभाग  
स्वा.स.ती.ग्रा.शा.वै.महाविद्यालय, अंबाजोगाई

## SPECIFICATIONS

### Hysteroscopic hand instruments set

- Standard Handy, Portable, Instruments.
- Should be autoclavable
- Instruments should be strong and long – lasting.
- These should be completely sterile and well insulated.
- Demonstration of each individual instrument is compulsory.
- 1 Year warranty should be given.

for

प्राध्यापक व विभागप्रमुख  
स्त्री-रोग व प्रसूतीशास्त्र विभाग  
म्बा.रा.ती.ग्रा.शा.वै.महाविद्यालय, अंबाजोगाई

SURGERY

SPECIFICATION FOR CAUTRY MACHINE

We introduce in the medical sector a new microprocessor based Electro Surgical Generator – SMART 4 . It combines excellent performance of Monopolar ( Cut – Coag ) and BIPOLAR modes, Integrated with microprocessor controls. This ESU provides user safety to the user during surgery and is ideal for surgeries that require high precision and reliability. Spray coagulation is an internal part of this surgical unit that gives a good homeostasis effect with minimum cutting effect.

**FEATURE :**

- 1) Feedback controlled response system
- 2) Automatically stops energy delivery as soon as the seal cycle is complete .
- 3) Minimum cutting effect
- 4) Spray Coagulation
- 5) Pure and smooth cut
- 6) BIPOLAR Output with a non sparking characteristics
- 7) Prompt start even in irrigation procedures
- 8) Providing good homeostasis effect

**APPLICATION :**

- 1) Micro Surgery
- 2) Laparoscopy surgery
- 3) Neurosurgery

**TECHNICAL SPECIFICATION : CUT :**

MODE	PROGRAMS	POWER	LOAD	Operating Frequency
PURE	99	400 W	500 Ω	480 KHz
BLEND 1	99	250 W	500 Ω	480 KHz
BLEND 2	99	200 W	500 Ω	480 KHz
Endocut	99	99 %	500 Ω	480 KHz



COAG :

MODE	PROGRAM	POWER	LOAD	Operating Frequency
SPRAY	99	120 W	500 Ω	480 KHz
FULGURATE	99	150 W	500 Ω	480 KHz
DESSICATE	99	150 W	500 Ω	480 KHz

BIPOLAR :

MODE	PROGRAM	POWER	LOAD	Operating Frequency
SOFT	99	80 W	100	480 KHz
FORCE	99	80 W	100	480 KHz
CUT	99	100 W	100	480 KHz

Other Parameters :

Display	7 Segment LED
Dimension ( W / H / D )	290mm / 105mm / 260mm
Weight	4 Kg
Keyboard	Feather touch
Input Supply Voltage	230V/AC + 15% @ 50/60hz




Professor & Head  
Dept. of Surgery,  
S.R.T.R. Govt. Medical College,  
Ambajogai

## SPECIFICATION FOR PEDSTAL O.T. LIGHT

Mobile OT Light Z 400M is designed in accordance with international quality parameters and is equipped with operating lights those is mobile in nature. The engrossed light are disinfectant resistance that make it maintenance free and enhance shelf life . This Surgical light is required for low energy consumption and incorporated with simple mechanical focusing handle designed for easy removing and fixing requirements . Therefore this range is appreciated for maintaining the hygienic condition and offer touch free adjustment functioning.

### Technical specification :

Control Unit : SMPS  
Color Temperature : 4300K  
Focus Diameter : 15 – 25 cm  
Light Intensity : 1,20,000 Lux  
Light Head Size : 60 cm  
Illuminating Adjustment : 10% - 100%  
Height Adjustment : 120cm  
Depth Of Illumination : 110 cm  
Number Of LED : 72  
Life Span Of LED : 50,000 Hrs  
Color Rendering Index : 92  
Total Power Consumption : 40W  
Power Supply : 160V - 240V DC , 50Hz

  
Professor & Head  
Dept. of Surgery,  
S.R.T.R. Govt. Medical College,  
Ambajogai

## SPECIFICATION FOR ECG MACHINE

Most Economical high performance Electrocardiograph.  
One touch operation for acquisition, analysis & printing that minimize training needs.  
Suitable for high volume hospital use.  
Capable of Communicating with PC for further viewing and management of ECG data.  
Simultaneous acquisition of all 12 leads.  
High resolution graphic TFT ( color ) display for onscreen preview of ECG waveform.  
Full alphanumeric keypad to enter patient and clinic information.  
Digital filter to eliminate baseline drift, AC & EMG interference .  
Isolation protection against defibrillation.  
Real time clock for date and time indication.  
Paper out indication.  
Printing Option ie; Rhythm lead , median , enlarge median , Grafical Axis , Measurement & Interpretation .  
Internal ECG data storage of upto 50 patient.  
Unlimited data storage through USB memory stick ( Optional )  
Offline ECG data transfer to PC ( Optional )  
Direct A4 ECG printing ( Optional )

### TECHNICAL SPECIFICATION

#### ECG

A/D Resolution : 12 Bit  
Filter : Low pass filter 20,35,40,130 Hz  
High pas filter 0.05, 0.10, 0.50 & 1.0Hz  
Notch Filter : 50/60 Hz  
Acquisition : Auto / Manual  
Input Impedance :  $\geq 100M$  ohm  
CMRR : 100 Db  
Sensitivity : 5mm /Mv , 10mm/Mv , 20mm/Mv  
Ampere  
Lead sullection: Standered 12 leads  
Memory : 50 Patient  
Frequency Response : 0.05-150Hz  
Time Constant : 3.2 sec  
Leakage Current :  $\leq 10$ Micro

#### Display

Display Format : Three Channel  
Color ) Graphics Display : 320 x 240 Pixel TFT Screen (  
Display Size : 3.5"

#### Recording & Printing

Record : : Thermal Printer  
50mm/sec  
Paper Speed : 12.5mm /sec, 25mm/sec,  
Recording Paper: Thermo Sensitive 80mm( Rolled )  
Printing Label : Patient Information template, leads, Calibration, Print Speed , Filter ,  
Sensitivity  
Print-Out Format : A) Auto Mode -3, 3 $\pm$  R with medians , 3+R with medians + axis +  
measurement & Interpretation  
B ) Manual mode – 3channel three different lead selected from keypad

**Power Supply :**

Line Power supply : ~220 – 240 V , 500Hz ± 10%  
Power Supply Operation : AC/DC with On/Off line battery charging  
Battery : = 12v / 1.2AH ( Lead Acid )  
Charging Time : 3 Hours

**Mechanical :**

Dimensions ( mm ) : 288mm x238mm x85mm  
Weight : 1.8Kg approx

**General**

Type Of Protection : Class II A      Degree of Protection : Type BF  
Communication Interface : USB

**Safety & Regulatory**

**1) Standards :**


EN ISO 1497:2000 + A1:2003C, EN ISO 13485 : 2003, EN 980 : 2003  
EN 60601-1-1:1990/A1: 1993, EN 60601 - -2:2001 , EN 60601-2-25:1995  
EN60601-2-51:2003

**2) Directive :**

MDD - 93/42/ECG  
EMC - 89/336/ECG

**ACCESSORIES :**

ECG Patient Cable :	(1)	Adaptor 19V, 3A, AC-DC	(1)
Power Cord	(1)	Fuse T 1.5A	(1)
Earthing Wire ( Optional )	(1)	Bulb Electrode	(6)
Limb Electrode	(4)	Conducting Tube Jelly	(1)
Thermal Print Roll	(1)	User Manual	(1)

  
Professor & Head  
Dept. of Surgery,  
S.R.T.R. Govt. Medical College,  
Ambajogai

Usage/Application Educational

Brand V TECH

Material Aluminium

Color Multi

Model Number VT-0876

I deal in New Only

Product Specification

Usage/Application Educational

Brand V TECH

Material Aluminium

Color Multi

Model Number VT-0876

I deal in New Only

Packing Type BOX

Minimum Order Quantity 1 Piece

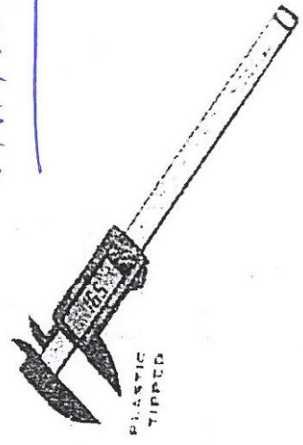
Product Description

It is an essential device for any precision study of the mandible.

It also helps to assess:

- By its horizontal scales, the length of the horizontal branch
- By its vertical scales, the height of the ramus
- By its rapporteur, the angle of the two branches

ANATOMY



Bellstone Plastic Digital Vernier Caliper 150 mm BO-35E  
Price : 1064/-

Key Features :

- Range : 0~150mm
- Resolution : 0.1mm
- Repeatability : 0.1mm
- Operating Temperature : 0°C~40°C
- Storage Temperature : -10 °C~60 °C

Buy Bellstone Plastic Digital Vernier Caliper 150 : m BO-35E online in India at wholesale rates. If you have been looking for Bellstone Plastic Digital Vernier Caliper 150 mm BO-35E dealers, your search ends here as you can get the best Bellstone Plastic Digital Vernier Caliper 150 mm BO-35E distributors in top cities such as Delhi NCR, Mumbai, Chennai, Bengaluru, Kolkata, Chennai, Pune, Jaipur, Hyderabad and Ahmedabad. You can purchase Bellstone Plastic Digital Vernier Caliper 150 mm BO-35E of the finest quality and rest assured to get the best in terms of both durability and performance. If you are bothered about the Bellstone Plastic Digital Vernier Caliper 150 mm BO-35E prices, you can be totally sure to get the best rates as Industrybuying brings you genuine Bellstone Plastic Digital Vernier Caliper 150 mm BO-35E rates and quality assured products only from the best of brands with exclusive brand discounts you won't find anywhere else. Procure Bellstone Plastic Digital Vernier Caliper 150 mm BO-35E today and avail the best offers on your purchase.

SKU

: TES.VER.51156817

Model No

: BO-35E

Type of Product

: Plastic Digital Vernier Caliper

Part No.

: 3220

Size

: 150 mm

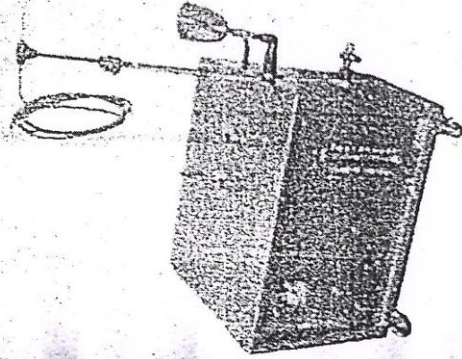
Frequency: 50 Hz

Application: Hospital

Brand: Radical

Model: RSTI-130

Voltage: 220 V



**Product Description:**

**FOUR Body**

Mortuary storage system is designed for storing cadaverous under cool condition to prevent decomposition. these are latest developments in mature technology offering vast space saving advantage over the conventional type with greater hygiene useful for hospitals, and supplying for our dealers.

Double-walled with mild steel/prefabricated panels for outer surface and stainless steel inner chamber with insulation in between. Front opening, hinged insulated doors lined with magnetic gasket, handle and lock arrangements with keys in duplicate for individual dead bodies.

Trays to carry dead bodies with handles at both ends travel on rollers fitted for easy movements. Exterior surface in chemically treated, ant rust coated and duly finished with powder coated paint. To avoid any moving part inside the cabinet, for easier maintenance/ and cleaning refrigeration unit is kept outside the chamber and fixed at rear, temperature of -2.5 to 5.5 c is maintained by hermetically sealed refrigerator compressor unit and is controlled by an automatic electronic solid state digital temperature controller cum indicator temperature controller is mounted on front panel. Provided on front top, along with pilot lamp main switch etc. supplied complete with trays, cord and plug. Suitable to work on 220 V. Single phase 50 Hz ac supply.

Used to storing cadaverous under low temperature cool condition in order to prevent decomposition. These units are double walled with outer made of M.S. sheet duly painted and inner wall of stainless steel. Front opening covered door with magnetic gasket lock & key and handle individual chambers are provided independent lock with duplicate keys. Trays made of G.I. sheet to carry dead bodies are provided with handles. Trays travel on rollers fitted with ball bearing for easy movement. Hermetically sealed compressor serves refrigeration unit, to maintain temperature range of 2° C to 5° C or (-) 15° C to (-) 20° C (as ordered) Unit is fitted with Digital Temperature Indicator-cum-controller. Works on 220/230 volts A.C. Power supply.

**Capacity Temp. Voltage Stabilizer**

- a) Single Body 2° to 5° C -15° to -20° C 3 KVA
- b) Two Bodies 2° to 5° C -15° to -20° C 4 KVA
- c) Three Bodies 2° to 5° C -15° to -20° C 5 KVA
- d) Four Bodies 2° to 5° C -15° to -20° C 8 KVA
- e) Six Bodies 2° to 5° C -15° to -20° C 8 KVA



"Technology LCD

Native Resolution 1280 x 800 (WXGA)

Brightness (Lumens) 3400

Optical Zoom No

If Yes, Optical Zoom (%) NA

If Yes, Type of Projector Short Throw (0.41 to 0.9)

Type of Light Source UHP / UHE / UHM

Minimum Life of Light Source (In Normal Mode) (Hours) 5000

On Site OEM Warranty for Light Source (Time or Life in Hours whichever is earlier) 1 Year or 1000

Hrs.

On Site OEM Warranty 2

Model No: EB-536W"

"Ports And Connectivity

Number of HDMI In Port 1

Number of HDMI Out Port 0

Number of DVI Port 0

Analog RGB In Port (Hours) Yes

Analog RGB Out Port Yes

HD Base T No

Audio In Yes

Audio Out Yes

Video In Yes

Storage Media Port No

If Yes, Supported File Formats NA

Number of USB Type A 1

Number of USB Type B 1

Number of USB Type C 0

Wi Fi Connectivity No

Wireless Screen Share No  
LAN Connectivity Yes  
Technical Specifications  
Technology LCD

Projection Method Front and Rear both  
Native Resolution 1280 x 800 (WXGA)  
Brightness (Lumens) 3400  
Contrast Ratio (Minimum) (pixels:1 X :1 ) 15000  
Optical Zoom No

If Yes, Optical Zoom (%) NA  
Availability of Lens Yes  
Remotely Controlled Yes  
If Yes, Type of Projector Short Throw (0.4" to 0.9)  
Aspect Ratio 16:10

Keystone Correction Automatic & Manual Both  
Type of Light Source UHP / UHE / UHM  
Minimum Life of Light Source (In Normal Mode) (Hours) 5000  
Lamp Hour Counter (In-Built) Yes  
Inbuilt Speaker Yes

If Yes, Wattage of Speaker 16  
3D Projection Capability No  
Interactive Feature Yes

Power Consumption in Sleep Mode (Watts) 2  
Power Consumption in Normal Mode (Watt) 298  
Noise Level in Echo Mode (dB) 29  
Noise Level in Normal Mode (dB) 37  
Power Supply 210V-240V, 50 Hz  
Battery No

If Yes, Minimum Battery Capacity (mAh) NA  
If Yes, Battery Backup Time (Hour) NA  
Certifications

BIS Registration under CRS of MeitY Yes  
BIS Registration Number R-41004898  
Other 6

Dimensions (Length x Breadth x Height) (mm x mm x mm) 314.5 x 344 x 94 mm  
Weight (Kg) 3.9

Minimum Operating Temperature (Degree C) -5  
Maximum Operating Temperature (Degree C) 35  
Minimum Operating Humidity ( % RH) 20  
Maximum Operating Humidity ( % RH) 80

Warranty

On Site OEM Warranty for Light Source (Time of Life in Hours whichever is earlier) 1 Year or 10000  
Hours

On Site OEM Warranty 2"

## TECHNICAL SPECIFICATIONS : FOGGING MACHINE

The fogging machine should have the following features:

- 1- Light Weight , portable & extremely user friendly.
- 2- It should be equipped with superior quality VAC motors, non rotating vortex design nozzle assembly & precision flow metering valves.
- 3- Machine should be highly versatile & ideal equipment to dispense wide range of chemical solutions like disinfectants, fungicides, germicides etc.
- 4- Power supply 220V AC, 50 or 60 HZ 5- It should have rugged design power head housing & 5 liter chemical solution tank from corrosion resistant HDPE plastic.
- 6- Size of aerosol should be submicron.
- 7- Nozzle assembly should be Non clogging design-Stain Steel needle non reactive Eng. Plastic.
- 8- Can treat 15000 cuft or larger space within few minutes.
- 9- It should spread to 50 ft. distance and reach to 25 ft. height.
- 10- Auto switch off timer in separate box 0 to 60 minutes.
- 11- Silicon tubing comlies to FDA and USP class VI.
- 12- Machine should be CE certified and SSI registere
- 13- It should have rugged design power head housing & 5 liter chemical solution tank from corrosion resistant HDPE plastic.
- 14- 05 Year Guaranty.
- 15- If Required the serving person should attend call for repairing in 48 Hour.
- 16 – AMC & Cmc will be applicable as per government Rules.

# SUCTION PUMP PORTABLE ELECTRIC

Version no.: 1.0  
 Date: SEPT 2014  
 Done by : (name/institution) HCT/NHSRC  
 NAME AND CODING  
 GMDN name Suction systems  
 GMDN code CT1272

## GENERAL

- 1. USE**
- 1.1 Clinical purpose To aspirate fluids, secretions, or other foreign materials from a patient's airway by means of suction.
  - 1.2 Used by clinical department/ward NICU & PICU

## TECHNICAL

- 2. TECHNICAL CHARACTERISTICS**
- 2.1 Technical characteristics (specific to this type of device)
    - 0 to - 760 mm Hg  $\pm$  10 regulable, 1/2 HP; single phase 1440 RPM motor; flutter free vacuum control knob, ; Wide mouthed 2 x 2 LITRE (light weight, unbreakable and clear) with self sealing bung and mechanical over flow safety device.
  - 2.2 Settings Manual
  - 2.3 User's Interface Manual
  - 2.4 Software and/or standard of communication (where ever required) NA

- 3. PHYSICAL CHARACTERISTICS**
- 3.1 Dimensions (metric) Max: 43 x 30 x 68 cms
  - 3.2 Weight (lbs, kg) Max: 27Kg
  - 3.3 Configuration NA
  - 3.4 Noise (in dBA) 50 dB  $\Lambda$   $\pm$  3
  - 3.5 heat dissipation Should maintain upto 36.5 deg temp and the heat disburshed through a exhaust fan
  - 3.6 Mobility, portability Yes

- 4. ENERGY SOURCE (electricity, UPS, solar, gas, water, CO<sub>2</sub> ....)**
- 4.1 Power Requirements 220 V, 50 Hz, 2  $\pm$  0.5 Amps, 370 watts for AC
  - 4.2 Battery operated NA
  - 4.3 Tolerance (to variations, shutdowns) Voltage corrector/stabilizer to allow operation at  $\pm$  30% of local rated voltage. Use of SMPS to correct voltage.
  - 4.4 Protection Electrical protection by resettable overcurrent breakers or replaceable fuses, fitted in both live and neutral lines.

4.5	Power consumption	should run with other life saving equipments running parallelly.
4.6	Other energy supplies	NA
<b>5. ACCESSORIES, SPARE PARTS, CONSUMABLES</b>		
5.1	Accessories & Spares	collection container & its cap, suction tube tips, a vacuum gauge, two sets of moisture & microbial filters and control knob.
5.2	Consumables/reagents (open, closed system)	Silicone Tubing: 8 mm ID x 2 mtr (PVC), 2x2 lt jar (one set extra)
<b>6. ENVIRONMENTAL AND DEPARTMENTAL CONSIDERATIONS</b>		
6.1	Atmosphere/Ambiance (air conditioning, humidity, dust...)	Capable of being stored continuously in ambient temperature of 0 to 50 deg C and relative humidity of 15 to 90%.
6.2	User's care, Cleaning, Disinfection & Sterility issues	Capable of operating continuously in ambient temperature of 10 to 40 deg C and relative humidity of 15 to 90%. Complete unit to be easily washable and sterilizable using alcohol and other chemical agents.
<b>7. STANDARDS AND SAFETY</b>		
7.1	Certifications	FDA/CE and BIS/ISO 13485:2003; IEC 60601-1-8; IEC 60601-1-SER-Ed 1.0-2011; IEC/TRF 60601-1-8-Ed 4.0-2010
<b>8. TRAINING AND INSTALLATION</b>		
8.1	Pre-Installation requirements: nature, values, quality, tolerance	Availability of 15 amp socket, safety and operation checks before handover.
8.2	Requirements for sign-off	Certificate of Calibration and inspection from the factory.
8.3	Training of staff (medical, paramedical, technicians) OPTIONAL (Depending upon scope of work order)	Training of users in operation and basic maintenance shall be provided.
<b>9. WARRANTY AND MAINTENANCE</b>		
9.1	Warranty	3 years
9.2	Maintenance tasks	Maintenance manual detailing complete maintaining schedule.
9.3	Service contract clauses, including prices	Local clinical staff/authorized officer on behalf of purchaser to affirm completion of installation.
<b>10. DOCUMENTATION</b>		
0	Operating manuals, service manuals, other manuals	Advanced maintenance tasks required shall be documented. User, technical and maintenance manuals to be supplied in english/hindi language along with machine diagrams. List to be provided of equipment and procedures required for local calibration and routine maintenance.
)	Other accompanying documents	List to be provided of important spares and accessories, with their part numbers and cost. Certificate of calibration and inspection to be provided.
<b>11. NOTES</b>		
Any Contract (AMC/MC/add-hoc) to be declared by the manufacturer.		
Service Support Contact details (Hierarchy Wise; including a toll free/landline number)		
Recommendations or warnings		
Any recommendations for best use and supplementary warning for safety should be declared.		

# ME 10

## Fingertip Pulse Oximeter

### The Scope of Application

Pulse oximeter is a very important and common device to check patient blood-oxygen saturation (SpO<sub>2</sub>) level and pulse rate. As a small, compact, simple, reliable and durable physiological monitoring device, fingertip pulse oximeter greatly enhances patient care. It is widely applied in clinic, hospital, social medical organizations, and first aid etc.

### Technical Specifications

**Patient Range**  
Adult and Pediatrics patients

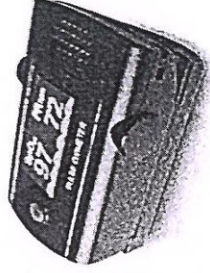
**SpO<sub>2</sub>**  
Measurement range 70% - 100%  
Resolution 1%  
Measurement accuracy 70% - 100%: ±3%

**Pulse Rate**  
Measurement range 30 - 235 bpm  
Resolution 1bpm  
Measurement accuracy 30 - 100: ±2 bpm  
101 - 235: ±2%

**Display**  
Type Dual color OLED display  
Parameters SpO<sub>2</sub>, PR, PI, Pulse bar,  
Mode 6 display modes  
Brightness Adjustable 10 levels

**Alarm**  
Alarm modes Battery-low indicator, SpO<sub>2</sub>, PR  
Audible & visual  
SpO<sub>2</sub>: < 90%  
PR: < 60bpm or > 100bpm

**Mechanical**  
Dimension 60mm (L) \* 34mm (W) \* 30mm (H)  
Weight 50g (including batteries)



### Features

- ◇ Small & lightweight design
- ◇ Dual color OLED display; 6 display modes
- ◇ Display SpO<sub>2</sub>, PR, PI, Pulse bar, Plethysmogram
- ◇ Low power consumption, automatic power off design
- ◇ Battery-low indicator
- ◇ Audible & visual alarm
- ◇ Adjustable brightness

### Battery

Two AAA 1.5V, 800mAh alkaline batteries about 30 hours.

### Environmental

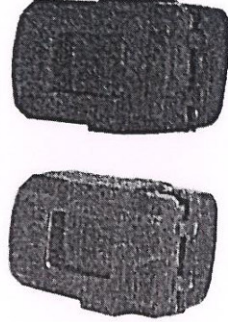
Operation Temperature 5°C - 40°C  
Storage Temperature -20°C - 55°C  
Operation Humidity <80%, non-condensing  
Storage Humidity <93%, non-condensing

### Electromagnetic Compatibility

This product complies with IEC60601-1-2 for electromagnetic compatibility Class B

### Interference Resistance Capacity against Ambient Light

Deviation is smaller than ±1% between values of Oxyhemoglobin measured in natural lighting indoor condition and present lighting sources and that measured in dark room.



Optional silicon rubber boot

PLAN

KS M

### Specifications of Adult CPR Training Manikin with Feedback

1.	The manikin should be realistic in appearance with modeled hair adult half body torso.
2.	The manikin should have a soft nose which can be occluded using the nose pinch technique.
3.	The manikin should be able to facilitate a head tilt/chin lift technique to open the airway and have an articulating jaw to facilitate a modified jaw thrust maneuver.
4.	The manikin should have visible chest raise and wireless feedback during ventilation.
5.	The manikin should have a disposable lower airway with an integral one-way valve
6.	The manikin should have a compression clicker which provides audible feedback.
7.	Feedback The BLS Torso should be able to connect with wireless tablets, smart phones and/or LCD wired feedback providing both student and instructor feedback.
8.	Wireless Instructor Feedback
•	Software shall be available for free downloads as many time as required providing real-time wireless feedback on compressions and ventilations
•	It shall be able to monitor and connect to get the live feedback from more than 5 individual BLS Torso mannequins simultaneously for group training.
•	It shall help provide improvement tips-based on CPR performance
•	Compression depth, rate release, time and chest compression fraction
•	Indication of too little, OK or excessive ventilation volumes
9.	Wireless Student Feedback
•	Wireless Student Feedback Software shall also be available for free downloads as many time as required providing real-time wireless feedback on compressions and ventilations, students can view and monitor their own performance for the following points
•	• Compression Depth and Rate
•	• Incomplete Release
•	• Ventilation volume It also provides with a summative feedback on the:
•	• Overall CPR score
•	• Improvement suggestions
•	• CPR duration
	The tethered plug and play feedback device shall also be able to provide detailed live feedback on compression and ventilation along with assessment and Summative Feedback Mode.
	Manikin should be supplied with Training Mat, 2 Manikin Faces, 2 Airways, 6 manikin wipes, LCD
	compressions and ventilations Feedback device and User Guide.
	Demonstration is mandatory.
	Manufacturer must conform to the International Quality Certification i.e. ISO & CE must be provided.

### **Specification of Infant CPR trainer with Feedback device**

- It should be airway occlusion(head tilt/chin lift, jaw thrust)
- It should be realistic chest rise and fall
- It should be debriefing through recorded events.
- It should be quick review of CPR performance
- It should be Brachial Pulses(pulse bulb)
- It should be Mouth-to-mouth ventilations
- It should be ventilations with face shield
- It should be Ventilations with pocket mask
- It should be ventilation with bag – valve- mask
- It should have ventilation measurement and feedback
- It should be chest compressions
- It should have compression measurement and feedback
- It should be detailed CPR evaluation (Not available with Skill Guide)
- It should be compression counter(Not available with skillguide)
- It should be complete release feedback



### **Specification of Pediatric CPR Trainer with feedback device**

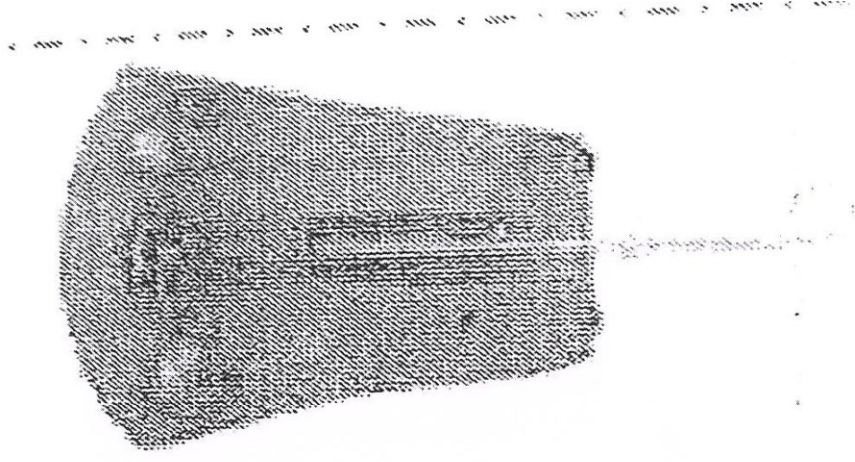
- It should be perform nose-pinch in head tilt, chin lift and jaw thrust to see chest rise
- It should be anatomically correct oral and nasal passages
- It should be see and hear that compressions are done correctly
- It should be built- in clicker signals when the correct compression depth is achieved.
- It should be Clean up is easy with disposable lungs and removable faces.
- It Should be check how every learner is performing with feedback on depth, release, rate and ventilations.

## Specification of Multi Venous IV training Arm Kit

- It should have venipuncture possible in the antecubital fossa or dorsum of the hand
- It should have Peripheral IV Line insertion and removal
- It should have accessible veins include median, basilica and cephalic
- It should have palpable veins enable site selection and preparation
- It should have Infusible veins allow peripheral therapy with IV bolus or push injection method
- It should have Peripheral IV line maintenance including assessment and rotation of site and dressing, solution and tubing change
- It should have replaceable skin and multi –vein system ensures longevity of model
- It should have articulates to adult manikins
- It should have Arms may be purchase separately.

Features:

1. The good shape of the model makes the training clearly.
2. Normal and abnormal positions of uterus can demonstrate the uterine anteversion and retroversion

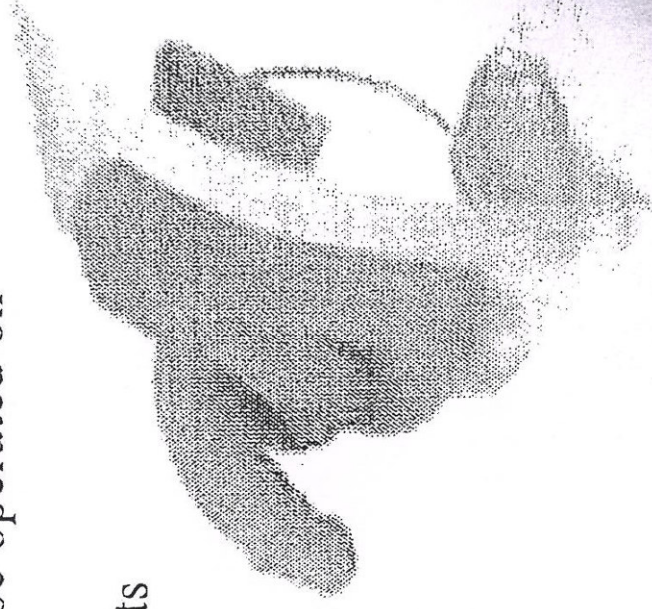


PACKAGE SIZE: 18cm\*15cm\*17cm

G.W.: 0.46KG

## Features:

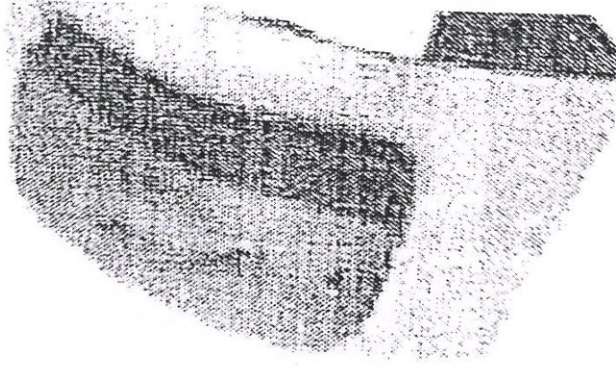
1. Simulate real urethral catheterization operation training, realistic genitalia can carry out real urethral catheterization and genital care operation;
2. Fixed on bracket, can be operated on table;
3. With water-proof shorts which can be worn outside of clothes to operate, suitable for a group of two students to practice.



## Female Catheterization Model

### Features:

1. Simulate real urethral catheterization operation training realistic genitalia can carry out real urethral catheterization and genital care operation;
2. Fixed on bracket, can be operated on table;
3. With water-proof shorts which can be worn outside of clothes to operate, suitable for a group of two students to practice.



Dbios-0050 Surgical Suture Arm  
Rs. 25200/-Each



Features:

1. With features of lifelike shape and realistic touch, the model suitable for cutting, suturing and bandaging exercise.
2. With wonderful elasticity and flexibility of skin, each model can be used for hundreds of times.

Dbios-0051 Surgical Suture Leg  
Rs. 28600/-Each



Features:

1. It can simulate basic surgical skills such as cutting, suturing, bandaging and etc.
2. With wonderful elasticity and flexibility of skin, each model can be used for hundreds of times.

Dbios-0060 Venipuncture Training Arm

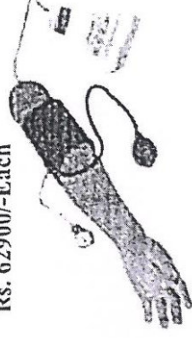
1. Simulating injection, blood transfusion, hemospasia of the arm;
2. There is obvious feeling when needle penetrates insertion;
3. Veins and skin can be acupuncture repeatedly, and these operations won't cause leaks.

Rs. 29600/-Each



Dbios-0054

Advanced Blood Pressure Arm  
Rs. 62900/-Each



Features:

1. This model is a simulated right hand. It has remarkable exterior features and precise anatomical structure. Arterial blood pressure measurement training can be run on this simulator.
2. It provides the sound of Korokoff Gap.
3. The contraction pressure and diastolic pressure can be set individually before practice.
4. The numerical value of the contraction pressure and diastolic pressure can be set in any value.
5. Pressure value is indicated by mmHg.
6. The setting precision can be as low as 1 mm Hg.

Dbios-0061

Venipuncture & Intramuscular Injection Arm

1. Injection, blood transfusion, hemospasia and deltoid intramuscular injection can be performed;
2. The skin can be replaced.

Rs. 38900/-Each



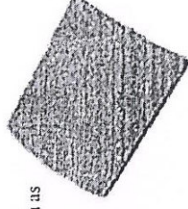
Dbios-0062

Suture Training Pad (with stand)

Rs. 3200/-Each

Features:

1. It can simulate basic surgical skills such as cutting, suturing, bandaging and etc.  
Multi-functional Cutting & Suturing Pad  
Suturing training for kinds of trauma shapes and positions



Charts

Cardiology  
Dermatology  
Endocrinology  
Environmental Medicine  
Gastroenterology  
Gynecology  
Hematology / oncology

42 Charts Infectious Disease  
63 Charts Interdisciplinary Medicine  
31 Charts Nephrology  
26 Charts Neurology  
63 Charts Psychiatry  
46 Charts Surgery  
64 Charts

Size 20"x26" Laminated & Fitted with Plastic Strip OR  
Size 20"x26" Laminated & Framed on NU-Wood Board

Rs. 800/- Each

Rs. 1400/- Each

Rs. 2990/- Each  
Midwifery Kit  
With article  
As per INC

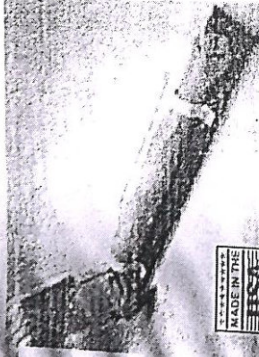
Website : [www.dbios.org](http://www.dbios.org)

I.V. Training

**IMP 125 A Advanced Multipurpose Venous Training Arm**  
Rs. 60920/-Each

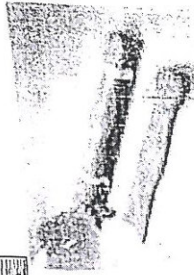
Features:

- Arm rotates 180° at deltoïd region.
- Connects to all Gaumard adult simulators.
- Subtle venous network in arm and hand.
- Cephalic, basilic, antecubital, radial, and ulnar veins.
- Realistic "pop" as needle enters vein.
- Intramuscular injection site in deltoïd area.
- Subcutaneous injection areas on the volar side of the forearm and the lateral side of the upper arm.
- Squeeze bulb to increase or decrease venous



- Veins stand out or collapse.
- Easily replaceable skin and veins.
- Administration of medication by intravenous bolus.

- Simulation of infusion technique.
- Blood collection exercises with simulated blood.
- Stimulation of clenched fist and tourniquet position.
- Soft Lucite base with stand.
- Soft nylon carrying bag.
- Set-up kit with simulated blood concentrate, pressure bulb, blood dispensing bag, spare skin, funnel, and powder.



**IMP 125 B Intravenous Training Arm**  
Rs. 52250/-Each

Features:

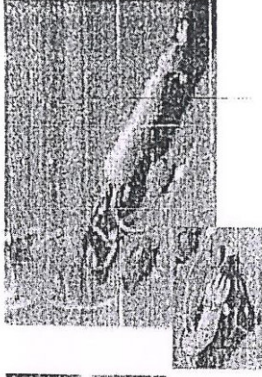
- Prominent venous network.
- Simulated cephalic, basilic, antecubital, radial, and ulnar veins.
- Simulation of infusion technique.
- Blood collection exercises with simulated blood.
- Administration of medication by intravenous bolus.
- Stimulation of clenched fist or tourniquet position.
- Realistic "pop" as needle enters vein.

- Resealing veins and outer skin.
- Smoked Lucite base with stand.
- Soft carrying bag.
- Set-up kit with simulated blood concentrate, pressure bulb, blood dispensing bag, spare arm skin, funnel, and talcum powder.
- Instruction manual.

**IMP 125 E One Year Injection Arm Newborn Injection Arm**

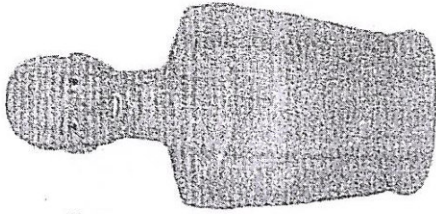
Features:

- Medial venous structure.
- Two veins in dorsum of hand.
- Radial and brachial arteries.
- Squeeze bulb simulating either collapsed or normal veins.
- Easily replaceable skin and veins that withstand multiple needle sticks.
- Mounted on smoked Lucite base and supplied with blood bag and stand, synthetic blood concentrate, squeeze bulb, and spare arm skin.



**Nasogastric Feeding and Trachea Intubation Care training Manikin**

Rs. 76000/-Each



**Buttocks Intramuscular Injection Model**

Rs. 45000/-Each



Dbios-0050 Surgical Suture Arm  
Rs. 25200/-Each

- Features:
1. With features of lifelike shape and realistic touch, the model suitable for cutting, suturing and bandaging exercise.
  2. With wonderful elasticity and flexibility of skin, each model can be used for hundreds of times.

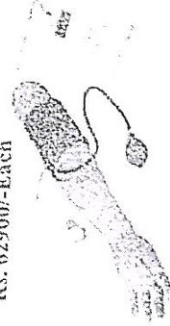


Dbios-0051 Surgical Suture Leg  
Rs. 28600/-Each

- Features:
1. It can be simulate basic surgical skills such as cutting, suturing, bandaging and etc.
  2. With wonderful elasticity and flexibility of skin, each model can be used for hundreds of times.



Dbios-0054  
Advanced Blood Pressure Arm  
Rs. 62900/-Each



- Features:
1. This model is a simulated right hand. It has remarkable exterior features and precise anatomical structure. Arterial blood pressure measurement training can be run on this simulator.
  2. It provides the sound of Korotkoff Gap.
  3. The contraction pressure and diastolic pressure can be set individually before practice.
  4. The numerical value of the contraction pressure and diastolic pressure can be set in any value.
  5. Pressure value is indicated by mm Hg.
  6. The setting precision can be as low as 1 mm Hg.

**Dbios-0060 Venipuncture Training Arm**

1. Simulating injection, blood transfusion, hemospasia of the arm;
2. There is obvious feeling when needle penetrates insertion;
3. Veins and skin can be acupuncture repeatedly, and these operations won't cause leaks.

Rs. 29600/-Each



Dbios-0061

**Venipuncture & Intramuscular Injection Arm**

1. Injection, blood transfusion, hemospasia and deltoid intramuscular injection can be performed;
2. The skin can be replaced. Rs. 38900/-Each



Dbios-0062

**Suture Training Pad (with stand)**

Rs. 3200/-Each

- Features:
1. It can be simulate basic surgical skills such as cutting, suturing, bandaging and etc.  
Multi-functional Cutting & Suturing Pad  
Suturing training for kinds of trauma shapes and positions



**Charts**

Size 20"x26" Laminated & Fitted with Plastic Strip OR  
Size 20"x26" Laminated & Framed on NU-Wood Board

Rs. 800/- Each  
Rs. 1400/- Each

- Cardiology 42 Charts
- Dermatology 63 Charts
- Endocrinology 31 Charts
- Environmental Medicine 26 Charts
- Gastroenterology 63 Charts
- Gynecology 46 Charts
- Hematology / oncology 64 Charts

- Infectious Disease 120 Charts
- Interdisciplinary Medicine 88 Charts
- Nephrology 11 Charts
- Neurology 50 Charts
- Psychiatry 30 Charts
- Surgery 30 Charts



Website : [www.dbios.org](http://www.dbios.org)

e-mail : [desh@dbios.org](mailto:desh@dbios.org)  
[deshbiological@gmail.com](mailto:deshbiological@gmail.com)



**Dbios-0050 Surgical Suture Arm**  
Rs. 25200/-Each



**Features:**

1. With features of lifelike shape and realistic touch, the model suitable for cutting, suturing and bandaging exercise.
2. With wonderful elasticity and flexibility of skin, each model can be used for hundreds of times.

**Dbios-0051 Surgical Suture Leg**  
Rs. 28600/-Each

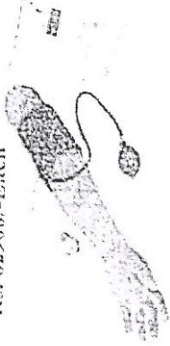


**Features:**

1. It can simulate basic surgical skills such as cutting, suturing, bandaging and etc.
2. With wonderful elasticity and flexibility of skin, each model can be used for hundreds of times.

**Dbios-0054**

**Advanced Blood Pressure Arm**  
Rs. 62900/-Each



**Features:**

1. This model is a simulated right hand. It has remarkable exterior features and precise anatomical structure. Arterial blood pressure measurement training can be run on this simulator.
2. It provides the sound of Korotkoff's Cap.
3. The contraction pressure and diastolic pressure can be set individually before practice.
4. The numerical value of the contraction pressure and diastolic pressure can be set in any value.
5. Pressure value is indicated by mm Hg.
6. The setting precision can be as low as 1 mm Hg.

**Dbios-0060 Venipuncture Training Arm**

1. Stimulating injection, blood transfusion, hemospasia of the arm;
2. There is obvious feeling when needle penetrates insertion;
3. Veins and skin can be acupuncture repeatedly, and these operations won't cause leaks.

Rs. 29600/-Each



**Dbios-0061**

**Venipuncture & Intramuscular Injection Arm**

Injection, blood transfusion, hemospasia and deltoid intramuscular injection can be performed; The skin can be replaced.

Rs. 38900/-Each



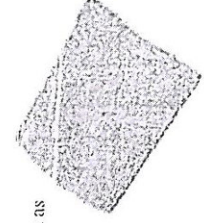
**Dbios-0062**

**Suture Training Pad (with stand)**

Rs. 3200/-Each

**Features:**

1. It can simulate basic surgical skills such as cutting, suturing, bandaging and etc.  
Multi-functional Cutting & Suturing Pad  
Suturing training for kinds of trauma shapes and positions



**Charts**

Biology  
Pathology  
Microbiology  
Dental Medicine  
Dentistry  
Zoology  
Pathology / oncology

Size 20" x 26" Laminated & Fitted with Plastic Strip OR  
Size 20" x 26" Laminated & Framed on NU-Wood Board

42 Charts Infectious Disease  
63 Charts Interdisciplinary Medicine  
31 Charts Nephrology  
26 Charts Neurology  
63 Charts Psychiatry  
46 Charts Surgery  
64 Charts

120 Charts  
88 Charts  
11 Charts  
50 Charts  
30 Charts  
30 Charts

Rs. 800/- Each  
Rs. 1400/- Each



: [www.dbios.org](http://www.dbios.org)

**Dbios-0050 Surgical Suture Arm**  
Rs. 25200/-Each

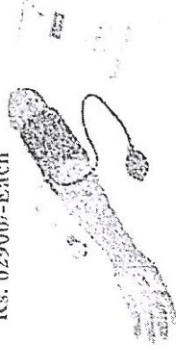
- Features:
1. With features of lifelike shape and realistic touch, the model suitable for cutting, suturing and bandaging exercise.
  2. With wonderful elasticity and flexibility of skin, each model can be used for hundreds of times.

**Dbios-0051 Surgical Suture Leg**  
Rs. 28600/-Each



- Features:
1. It can be simulate basic surgical skills such ascuting, suturing, bandaging and etc.
  2. With wonderful elasticity and flexibility of skin, each model can be used for hundreds of times.

**Dbios-0054 Advanced Blood Pressure Arm**  
Rs. 62900/-Each



- Features:
1. This model is a simulated right hand. It has remarkable exterior features and precise anatomical structure. Arterial blood pressure measurement training can be run on this simulator.
  2. It provides the sound of Korokoff's Gap.
  3. The contraction pressure and diastolic pressure can be set individually before practice.
  4. The numerical value of the contraction pressure and diastolic pressure can be set in any value.
  5. Pressure value is indicated by mm Hg.
  6. The setting precision can be as low as 1 mm Hg.

**Dbios-0066 Venipuncture Training Arm**

1. Simulating injection, blood transfusion, hemospasia and deltoid intramuscular injection can be performed;
2. There is obvious feeling when needle penetrates insertion;
3. Veins and skin can be punctured repeatedly, and these operations won't cause leaks.

Rs. 28600/-Each



**Dbios-0061**

**Venipuncture & Intramuscular Injection Arm**

1. Injection, blood transfusion, hemospasia and deltoid intramuscular injection can be performed;
2. The skin can be replaced.

Rs. 35900/-Each



**Dbios-0062**

**Suture Training Pad (with stand)**

Rs. 3200/-Each

- Features:
1. It can be simulate basic surgical skills such as cutting, suturing, bandaging and etc. Multi-functional Cutting & Suturing Pad Suturing training for kinds of trauma shapes and positions



**Charts**

- Cardiology
- Dermatology
- Endocrinology
- Environmental Medicine
- Gastroenterology
- Gynecology
- Hematology / oncology

Website : [www.dbios.org](http://www.dbios.org)

- Size 20"x26" Laminated & Fitted with Plastic Strip OR
- Size 20"x26" Laminated & Framed on NU-Wood Board

Rs. 800/- Each  
Rs. 1400/- Each

- 42 Charts Infectious Disease
- 63 Charts Interdisciplinary Medicine
- 31 Charts Nephrology
- 26 Charts Neurology
- 63 Charts Psychiatriary
- 46 Charts Surgery
- 64 Charts

- 120 Charts
- 88 Charts
- 11 Charts
- 50 Charts
- 30 Charts
- 30 Charts

